

## York Suburban High School

### Student Assistant Program Members

Dr. Jamie Britton	Guidance Counselor
Ms. Karen Forrer	Guidance Counselor
Ms. Suzann Pranaitis	Guidance Counselor
Mr. David Snyder	True North Counselor
Mrs. K. Tina Howe	Director of Guidance
Mrs. Denise Stayman	Administrative Assistant
Ms. Jane Troxell	True North Counselor

For additional  
information contact:  
York Suburban High School  
Guidance Office  
1800 Hollywood Drive  
York, PA 17403  
Phone: (717) 885-1272  
Fax: (717) 885-1273  
[www.yssd.org](http://www.yssd.org)

### Do you see your child showing any of these behaviors?

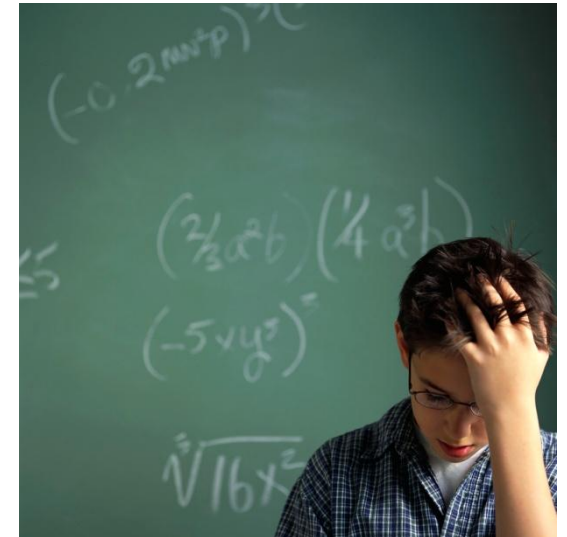
- Withdrawing from family, friends and/or school
- Changing friends; no longer spends time with old friends
- Unexplained physical injuries
- Talking about suicide
- Depressed
- Defying authority, both at home and at school
- Acting aggressively
- Lying
- Needing money without an explanation
- Sudden drop in grades
- Experimenting with drugs and/or alcohol

*If your child is having trouble in or out of school, we can help you. There may be times when you just don't know how to help your child. That's okay; someone else may know how to help.*

### Are you concerned about your child's reaction to:

- Recent death of a loved one
- Divorce of parents
- Family relocation
- A relationship problem
- Other traumatic event

## Student Assistance Program (S.A.P.)



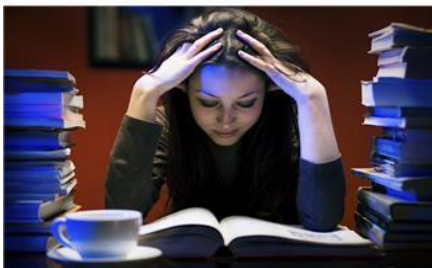
## York Suburban High School



## What is the Student Assistance Program?

Many students are faced with problems which interfere with their educational performance as well as their physical, mental, social, and emotional development. When this occurs, it is a matter of concern to teachers, counselors, administrators, and other school staff.

The York Suburban High School Student Assistance Program is a systematic and professional response to students' problems in our school. When problems interfere with student's educational performance or school program and appear to be related to mental health issues or substance abuse, it is appropriate to refer them to our trained response group that we call ACT which stands for Assistance Core Team ("Team").



## How Are Referrals Made?

Student referrals to the Team may be made by teachers, parents, other students, or by self-referral of a student experiencing difficulty in a situation.

Any student who violates the Drug and Alcohol Policy of the York Suburban School District is presently required to undergo professional evaluation which may result in a recommendation for treatment programs.

*All referrals are confidential!*

**Referrals can be made in the guidance office or by contacting the student's counselor. Please refer to our website for their contact information at [www.yssd.org](http://www.yssd.org).**

## What Happens After a Referral is Made?

The parent(s) or guardian(s) of the referred student will be contacted to receive written permission for evaluation. Teachers, counselors, and a school nurse complete observation checklists on the student. This data will be gathered by a caseworker to present to the Team who will determine the appropriate course of action.

## Who is on the Assistance Core Team?

The heart of the Student Assistance Program is the specially trained Assistance Core Team (ACT). The members of the Team have undergone intensive training provided by the Lincoln Intermediate Unit No. 12. The Team will work at the high school to identify and help students with substance abuse problems, emotional concerns, and/or suicidal intentions. Students may be referred to a program to receive professional counseling at appropriate drug and alcohol or mental health community agencies that serve the York area.

Consultants from True North Wellness Services are members of our Team.

### **Consulting Agency:**

True North Wellness Services  
1195 Roosevelt Ave  
York, PA 17404  
(717) 843-0800